

Expertise - Quality - Service



ASAUTOMECH
SOLUTIONS



Econo Series reagent system

ASAutoMech Solutions (PTY) Ltd.

Reg Nr. 2002/007472/07

161 Clydesdale Rd., Daggafontein Ext,
Springs, South Africa, 1564

☎ +27 11 363 0534/5/6

@ info@asautosol.co.za

📍 S 26° 17' 42.0" E 28° 28' 29.8"



www.asautomech.co.za



Applying the highest standards of Engineering through...

EXPERTISE, QUALITY & SERVICE





Econo Series reagent system

A Fully Automated, Robust Locally Designed Unit

We engineer and develop equipment and systems for

INDUSTRIAL SOLUTIONS

in the Advanced Water Treatment, Mining Reagent Systems, and Food Processing Industries



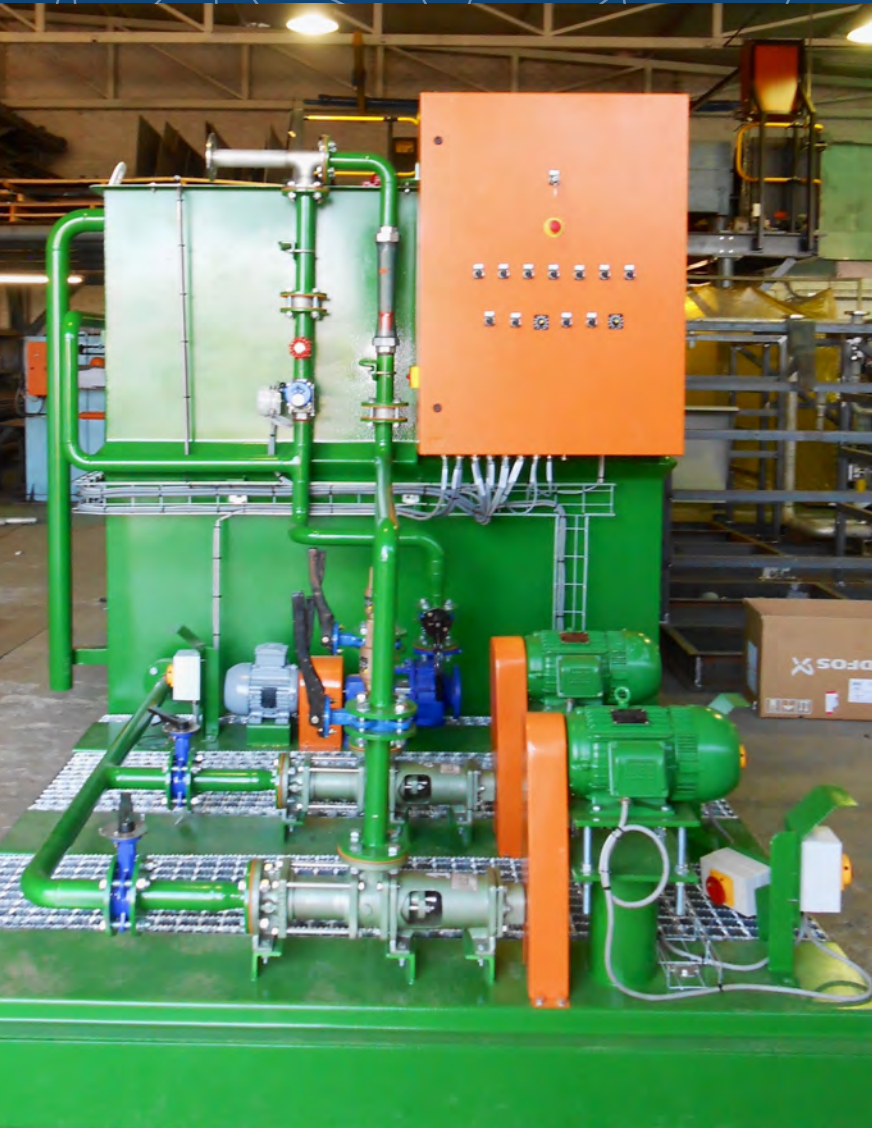
Application

The “Econo Series” Reagent units are used for the volumetric addition, preparation, hydration and dosing of a variety of powder and liquid polymers. A robust designed system, compliant with SANS, SABS, ANSI, ISO and other relevant specifications and regulations. The high standards of workmanship, fabrication and quality make it highly effective and competitive in mining, process, pulp & paper, water treatment and underground applications.

Features

- Pre – Engineered unit
- Robust material construction
- Stainless steel screw feeder & hopper
- Correctly sized stirrer and pumps
- Positive displacement Rotor or Diaphragm pump
- Interlock protection for all critical components
- Minimum of IP55 protection on all components
- Skid mounted for ease of installation or re-location
- Units Available: Batch, Continuous and Quick Change
- Conversion between Liquid and Powder possible
- Compliant to engineering requirements and standards
- Control Panel with VSD Drives on demand





Expertise - Quality - Service



www.asautomech.co.za



Options & Selections

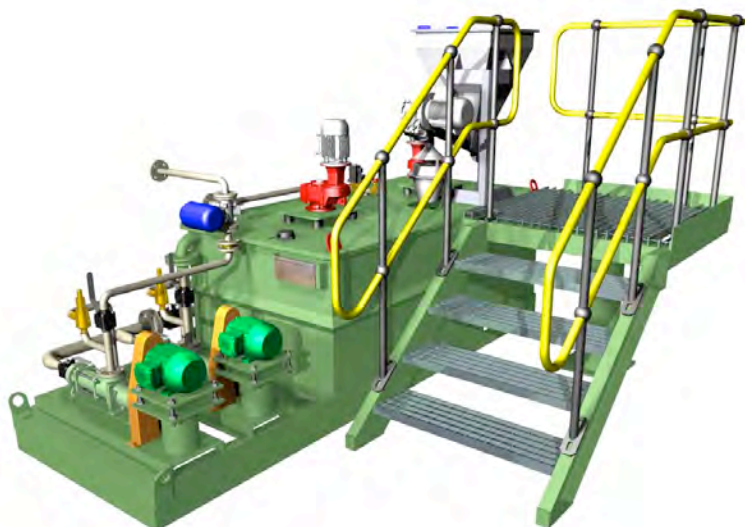
- Various materials of construction can be selected based application requirements, Poly Propylene, Carbon Steel, 3CR12 and all grades of Stainless Steel
- Units can be build with Open or Closed Tops with Inspection hatches
- Pump selection is process based with Rotor Stator, Peristaltic or Diaphragm types available
- Different Bag delivery options catered for such as 25Kg, and Bulk Bags in several formats
- Two or Three Chamber units available based on process requirements

Benefits

- Fully Automated
- Low maintenance & operational costs
- Accurately sized components
- Maximum wetting & efficiency of polymer
- Hydration times of 1,5 hrs & better
- Flexible concentration parameters
- Low transport & installation costs
- Short & prompt commissioning times
- In-house engineering & manufacturing
- Compatible to powder polymer & liquid latex
- No excessive energy or shearing during make-up
- Standard Models selection from 200g/Hr to 250 kg/Hr
- Simplistic Operator & User Interface



Econo Series Models



Econo Series Model 00	Specs
Approximate Dimensions (m)	3,0L * 1,0W * 1,8H
Max Dosing rate (Liter / Hour)	0 - 300
Live tank volume (M^3)	1,2
Hopper Volume (L)	70

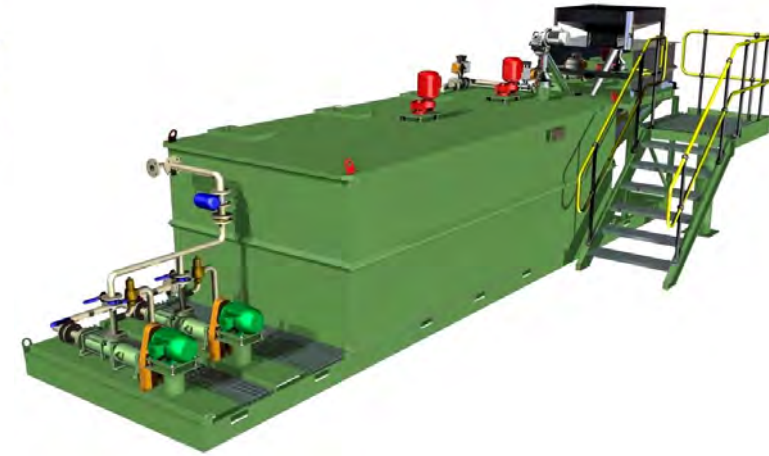
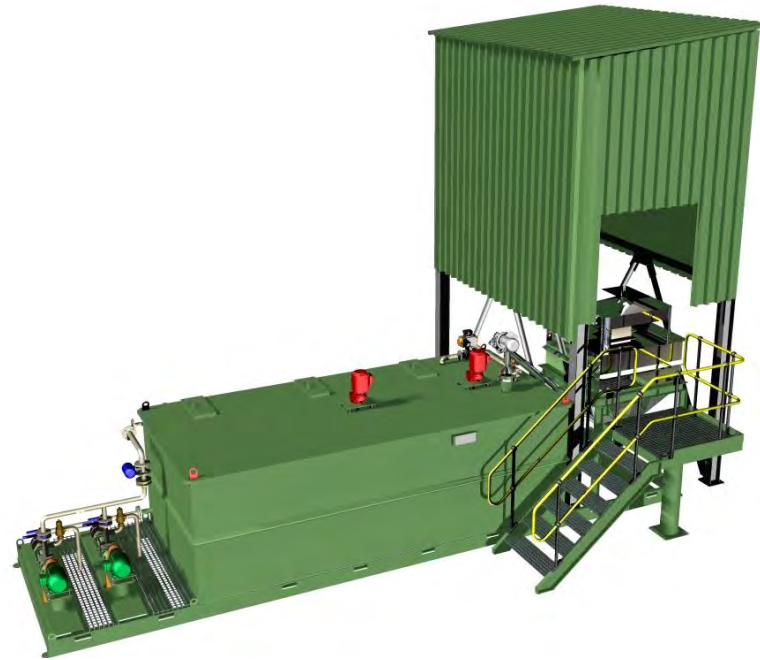


Econo Series Model 01	Specs
Approximate Dimensions (m)	3,7L * 1,2W * 1,8H
Max Dosing rate (Liter / Hour)	200 - 400
Live tank volume (M^3)	1,6
Hopper Volume (L)	70



Econo Series Model 02	Specs
Approximate Dimensions (m)	4,5L * 1,5W * 2,5H
Max Dosing rate (Liter / Hour)	300 - 650
Live tank volume (M^3)	2,6
Hopper Volume (L)	170

Expertise - Quality - Service

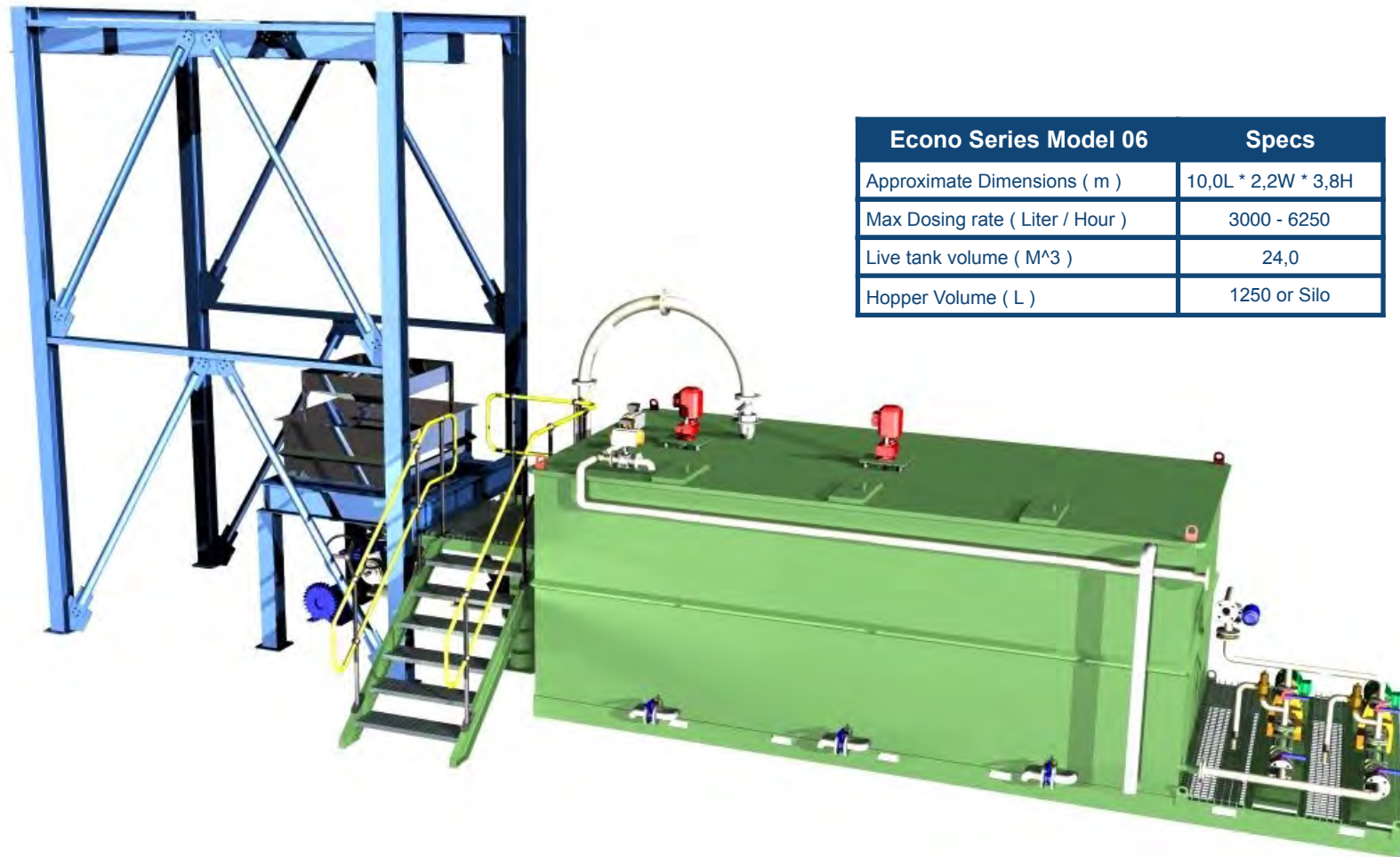


Econo Series Model 03		Specs
Approximate Dimensions (m)	5,5L * 2,2W * 2,8H	
Max Dosing rate (Liter / Hour)	500 - 1375	
Live tank volume (M ³)	5,5	
Hopper Volume (L)	170	

Econo Series Model 04		Specs
Approximate Dimensions (m)	7,5L * 2,2W * 2,8H	
Max Dosing rate (Liter / Hour)	800 - 2750	
Live tank volume (M ³)	11,0	
Hopper Volume (L)	270	

Econo Series Model 05		Specs
Approximate Dimensions (m)	8,2L * 2,2W * 3,3H	
Max Dosing rate (Liter / Hour)	2500 - 4500	
Live tank volume (M ³)	18,0	
Hopper Volume (L)	450 or 1250	

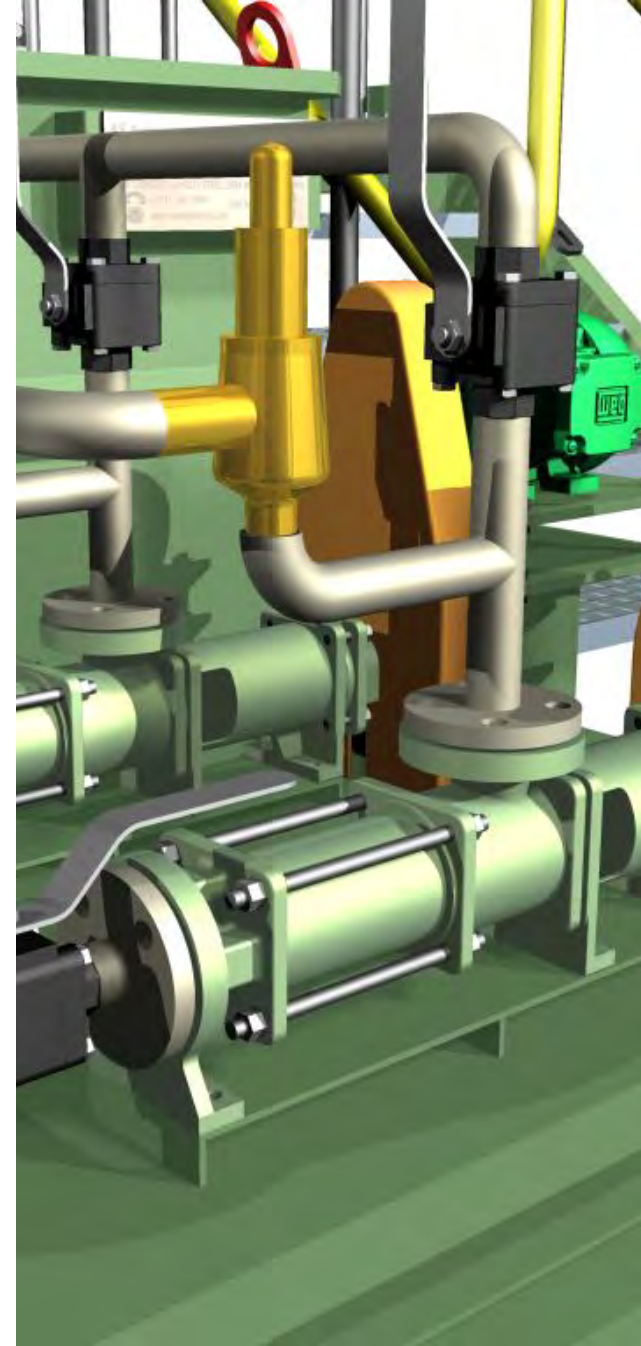
Econo Series Models



Expertise - Quality - Service

Operation

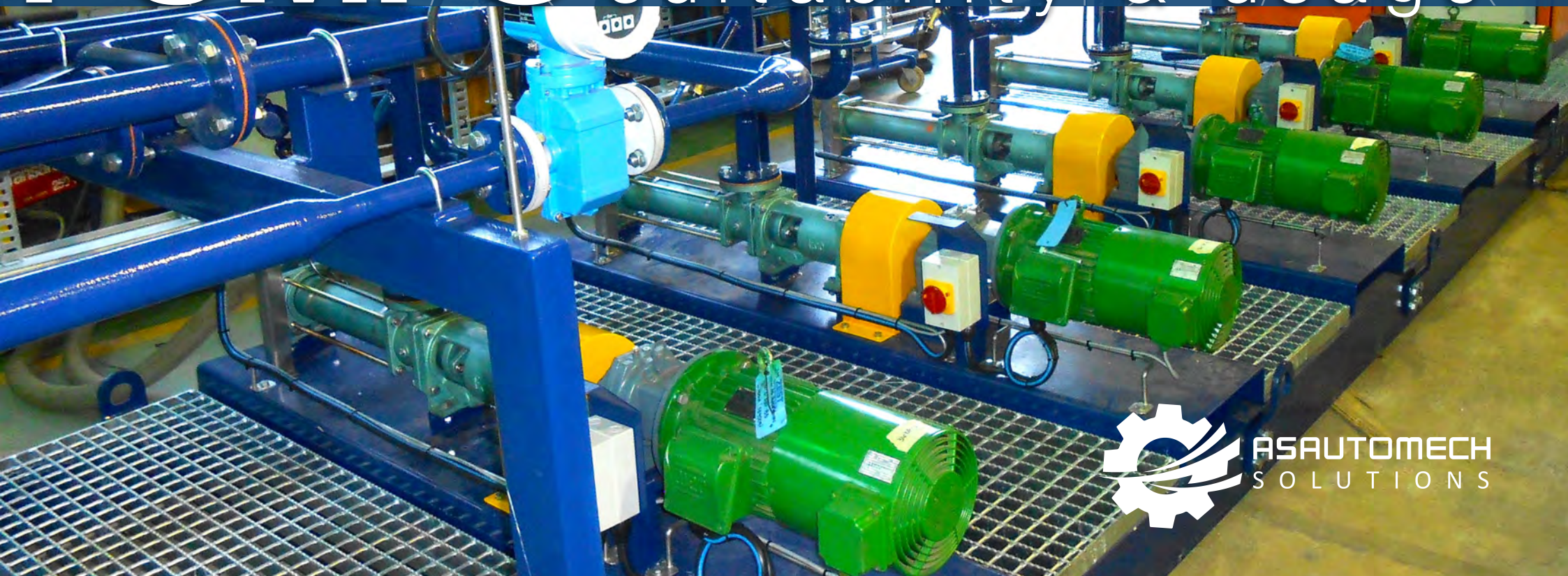
1. Low level in dosing chamber initialises the make-up cycle
2. Correct amount of polymer is added to the make-up chamber via fixed screw feeder
3. Slurry is agitated to ensure adequate mixing and dissolving
4. Prepared batch is forwarded or pumped to a hydration and with certain reagents to a dosing chamber
5. Based on plant demand is pumped to the process.



Extremely well suited for remote
areas on the African continent



PUMPS suitability & usage



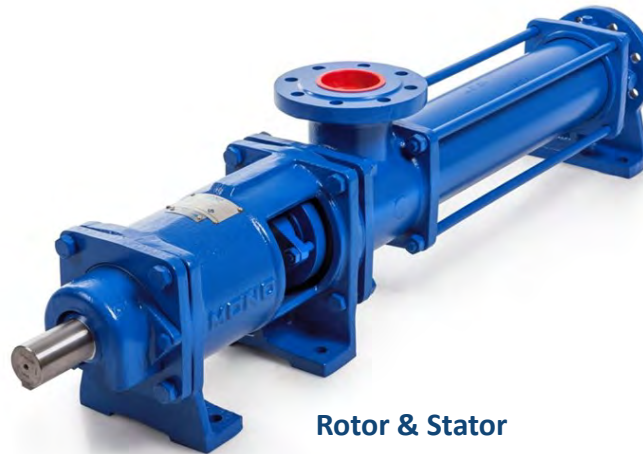
ASAUTOMECH
SOLUTIONS

Pump Models

Various pump types and models are available to compliment our units based on the application and process requirements. We do not have close alliances with any particular manufacturer or make but will always select known brands with reputable products.



Peristaltic



Rotor & Stator



Diaphragm



ASAUTOMECH
SOLUTIONS

ASAutoMech Solutions (PTY) Ltd.

Reg Nr. 2002/007472/07

161 Clydesdale Rd., Daggafontein Ext,
Springs, South Africa, 1564

☎ +27 11 363 0534/5/6

@ info@asautomech.co.za

📍 S 26° 17' 42.0" E 28° 28' 29.8"

Expertise - Quality - Service



www.asautomech.co.za